

# Super Silt Fence Accessories

Sediment Control



QUALITY - SUPPORT - EXPERTISE





# Super Silt Fence Accessories



## Super Silt Fence Clips

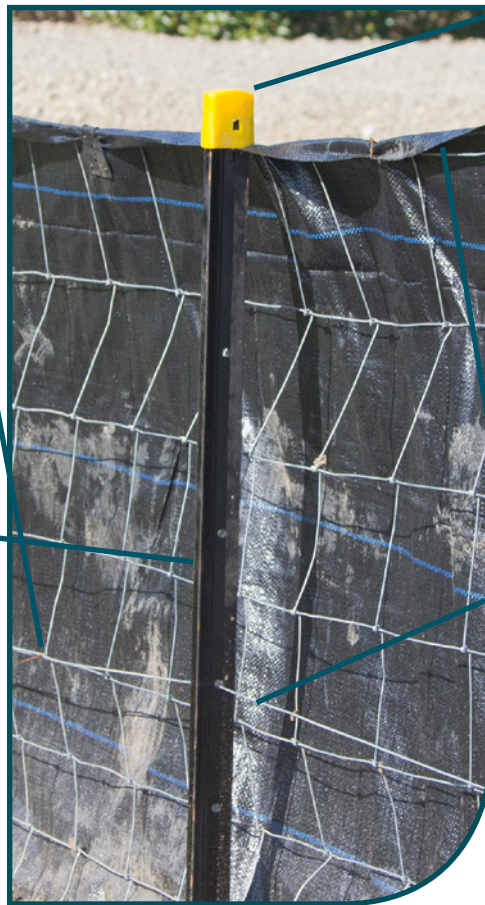
Reusable silt fence butterfly clips attach the super silt fence to the wire. Clips are supplied in bags of 250.

## Super Silt Fence Pins

Silt fence pins are used to secure the silt fence to the wire and are supplied in bags of 100.

## Steel Y Posts

Steel Y posts for use with temporary fencing such as silt fencing. Posts are coated for improved durability.



## Plastic Safety Caps

Plastic safety caps reduce the risk of cuts and abrasions from exposed post ends and are placed on top of the Steel Y posts. Brightly coloured for visibility, plastic caps are available in bags of 20.

## Silt Fence Wire

2.5mm high tensile wire for use with silt fence and safety fences.

### NEW ZEALAND

**AUCKLAND**  
(64) 9 634 6495

**HAMILTON**  
(64) 21 732 178

**NAPIER**  
(64) 21 916 736

**CHRISTCHURCH**  
(64) 3 349 5600

### AUSTRALIA

**MELBOURNE**  
(03) 8586 9111

**SYDNEY**  
(02) 8785 8800

**NEWCASTLE**  
(02) 4951 2688

**COFFS HARBOUR**  
(02) 6653 5706

**PERTH**  
(08) 6305 0561

**ADELAIDE**  
(08) 8162 5855

**HOBART**  
(03) 6273 0511

**BRISBANE**  
(07) 3279 1588

**TOWNSVILLE**  
(07) 4774 8222

**BUNDABERG**  
(07) 4155 9968

**GOLD COAST**  
(07) 5594 8600

**DARWIN**  
0407 523 669

**0800 60 60 20**

(Freephone NZ only)

**GEOFABRICS.CO.NZ**  
**GEOFABRICS.COM.AU**

Follow  
Geofabrics on



YouTube

**GEOFABRICS®**

The information contained in this brochure is general in nature. In particular the content of this brochure does not take account of specific conditions that may be present at your site. Site conditions may alter the performance and longevity of the product and in extreme cases may make the product wholly unsuitable. Actual dimensions and performance may vary. If your project requires accuracy to a certain specified tolerance level you must advise us before ordering the product from us. We can then advise whether the product will meet the required tolerances. Where provided, installation instructions cover installation of product in site conditions that are conducive to its use and optimum performance. If you have any doubts as to the installation instructions or their application to your site, please contact us for clarification before commencing installation. This brochure should not be used for construction purposes and in all cases we recommend that advice be obtained from a suitably qualified consulting engineer or industry specialist before proceeding with installation. This brochure is current as at the date printed below. Geofabrics New Zealand Ltd may make amendments to this document at any time. Please refer to our website, or contact our nearest sales office to ensure you have the most current version. © Copyright held by Geofabrics New Zealand Ltd. All rights are reserved and no part of this publication may be copied without prior permission.