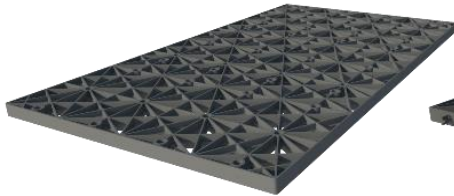
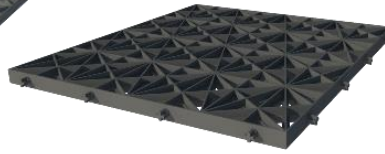


PLATES REQUIRED TO ASSEMBLE 1 FLO-TANK[®] 4 PLATE

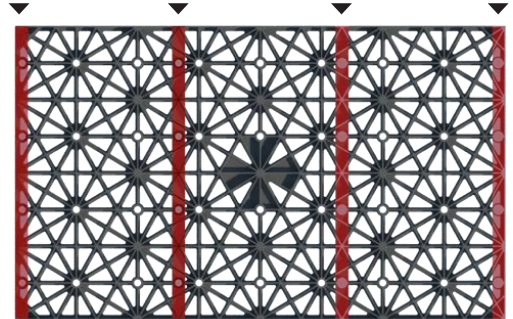


4 X LARGE PLATES



4 X SMALL PLATES

4 PLATES POSITION DIAGRAM



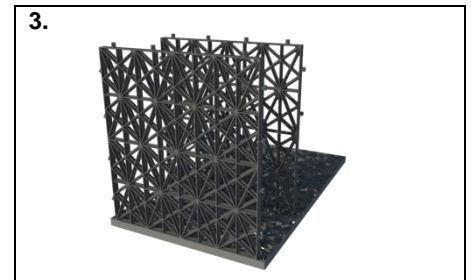
1.

Place *large plate* onto work bench.



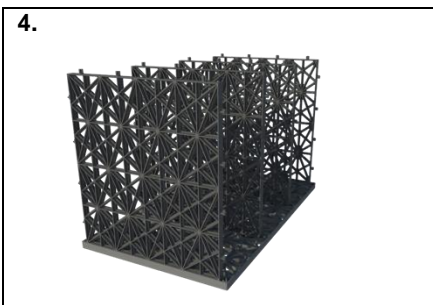
2.

Insert the *small plate* and firmly press it into the large plate.



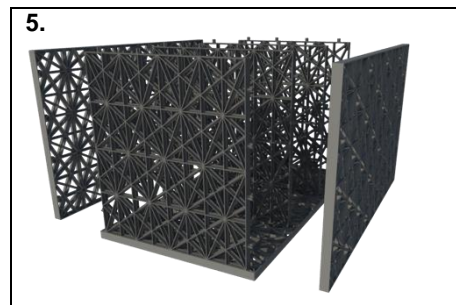
3.

Insert additional *small plates* as per the **position diagram**.



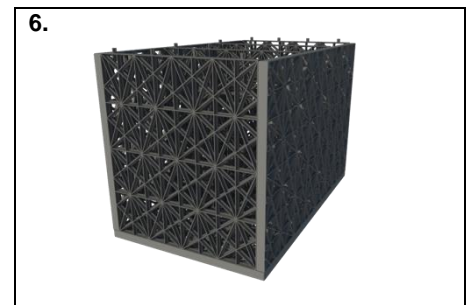
4.

Complete insertion of *small plates*.



5.

Insert the *large plates* on both sides of assembly using rubber mallet.



6.

Large plates inserted into position



7.

Place the large plate over the assembly and use rubber mallet to secure it in place.



8.

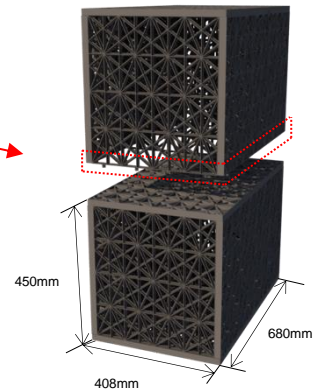
Complete Module



ASSEMBLE ADDITIONAL SINGLE FLO-TANK® 4 PLATE MODULE REPEATING STEPS 1, 2, 3, 4 & 5.

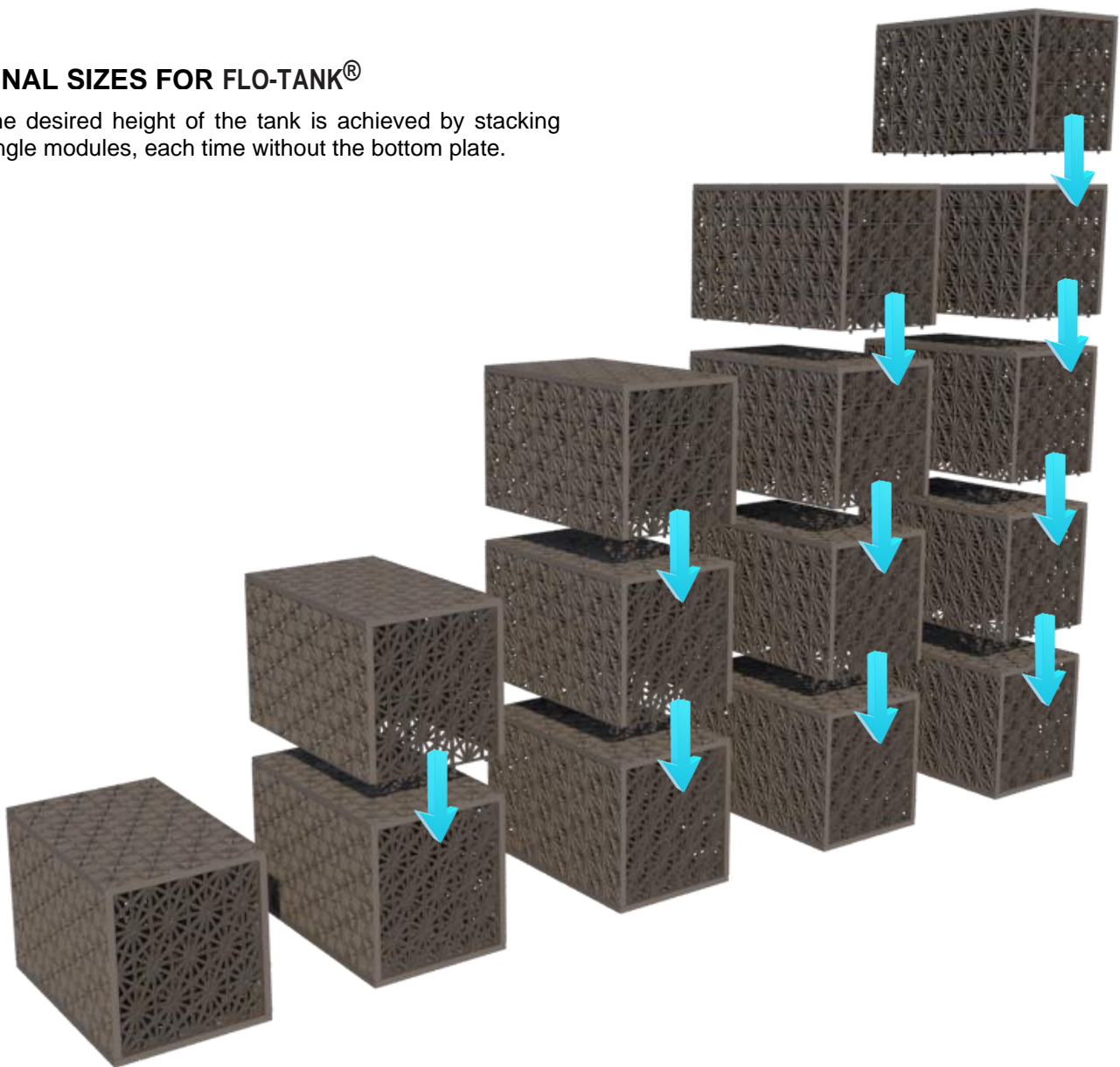
Keep stacking the assembled single modules to create the desired tank height.

NOTE: The modules to be stacked do not have the bottom plate



FINAL SIZES FOR FLO-TANK®

The desired height of the tank is achieved by stacking single modules, each time without the bottom plate.



SINGLE MODULE	DOUBLE MODULE	TRIPLE MODULE	QUAD MODULE	PENTA MODULE
70003	70004	70005	70006	70007
Height: 450mm	Height: 880mm	Height: 1310mm	Height: 1740mm	Height: 2170mm
Length: 685mm	Length: 685mm	Length: 685mm	Length: 685mm	Length: 685mm
Width: 408mm	Width: 408mm	Width: 408mm	Width: 408mm	Width: 408mm